

Monthly Operations Report

April 2008



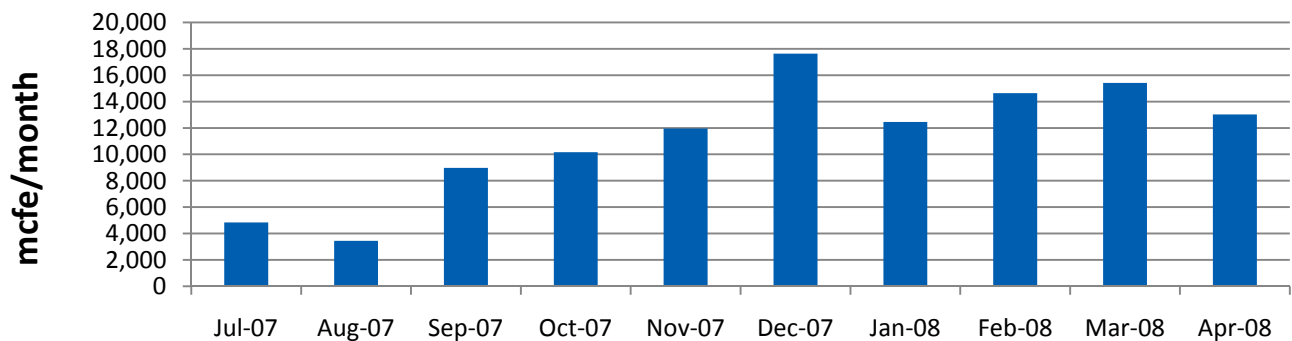
Prospects

Well	Working Interest	Net Revenue Interest	Location (County)	Spud Date (estimated)	Total Depth (est.)	Target Initial Rate (est.)	Target Reserves (est.)
						Mcf/d	MMcf
			Oklahoma				
FHM #1-15-6-23	15.0%	11.3%	LeFlore	July	11,000 ft	1,500	1,500
Bledsoe #1-12	7.0%	5.3%	LeFlore	July	9,000 ft	1,000	1,000
McClain #2-17 H	10.0%	7.5%	LeFlore	June	9,000 ft	3,000	5,000
Pate #7-18	10.0%	8.0%	LeFlore	Sept	11,000 ft	1,500	3,000
FHM #1-19-6-23	8.0%	6.0%	LeFlore	Aug	11,000 ft	1,500	2,000
Claiborne #3-17	8.5%	6.4%	LeFlore	Oct	9,600 ft	1,000	1,500
FHM #6-23	8.0%	6.0%	LeFlore	Dec	12,000 ft	1,000	1,500
Ashby #12-29	3.8%	3.3%	Custer	July	11,800 ft	1,000	2,500
Ashby #15-29	3.8%	3.3%	Custer	May	11,800 ft	1,000	1,700
Ashby #16-29	3.8%	3.3%	Custer	June	11,800 ft	1,000	1,500
			Louisiana				
See next page for Napoleonville Prospects and Drilling Schedule							
						BOPD	BO
			Texas				
Patman #3	12.5%	9.2%	Jackson	June	8,800 ft	50	72,000

Drilling

Well	Working Interest	Net Revenue Interest	Location (County)	Spud Date (estimated)	Total Depth (est.)	Current Depth	Target Initial Rate (est.)	Target Reserves (est.)
							Mcf/d	MMcf
			Oklahoma					
Ashby #14-29	3.8%	3.3%	Custer	Completing	11,623 ft	11,623 ft	1,000	2,500
			Louisiana					
Bourque #1	10.0%	7.5%	Iberville	Testing	10,790 ft	10,790 ft	1,000	2,000
			Texas					
Wadsworth #1	15.0%	11.3%	Matagorda	Testing	9,500 ft	3,500 ft	1,000	2,000
							BOPD	BO
Patman #1	12.5%	9.2%	Jackson	Completing	8,949 ft	8,949 ft	50	72,000
Patman B#1	12.5%	9.2%	Jackson	Completing	8,987 ft	8,987 ft	50	72,000

Gas Prod'n

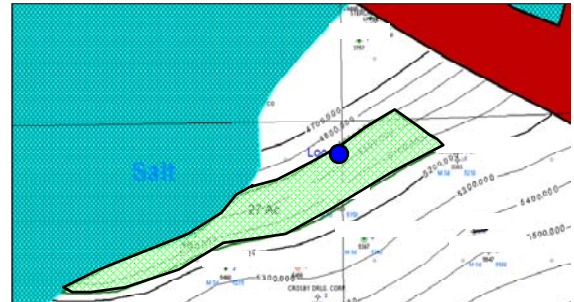


NB. Oil production is included at 1 B = 10 Mcfe

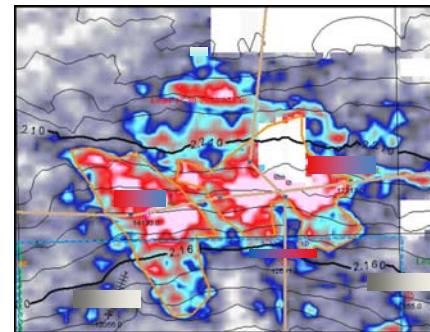
Napoleonville Prospects & Drilling Schedule



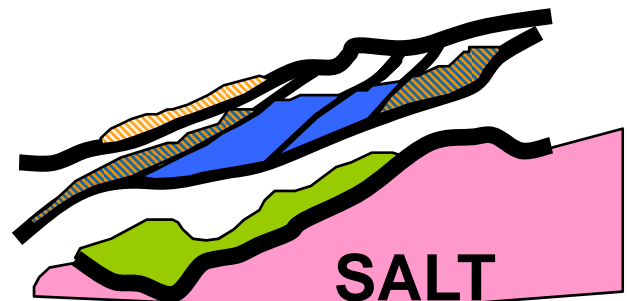
Well	Big Hum PUD
Spud Date (est.)	Sept 2008
Total Depth	5,500 ft
Target Initial Rate	2-5 MMcf/d
Target Reserves	1-3 Bcf



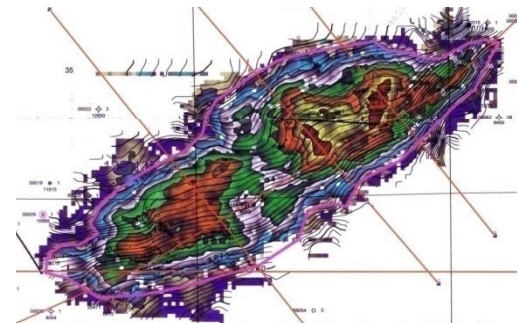
Well	Big Hum 8,200'
Spud Date (est.)	Oct 2008
Total Depth	8,500 ft
Target Initial Rate	1.5-3 MMcf/d
Target Reserves	Up to 7.5 Bcf



Well	Cris I
Spud Date (est.)	Nov 2008
Total Depth	10,000 ft
Target Initial Rate	200-300 BOPD
Target Reserves	Up to 400 MBO



Well	Cib Haz
Spud Date (est.)	Dec 2008
Total Depth	13,500 ft
Target Initial Rate	3-10 MMcf/d
Target Reserves	10-50 Bcf or 5- 15 MMBO



Grand Gulf interest in all wells is 26.3%. Grand Gulf pays 29.3% of initial 3 wells. Net Revenue Interest (NRI) is 19.725%.

Well timing and actual dates for drilling will be subject to change due to timing of approvals to drill wells, land access etc.